

# Daily review

May 27, 2008

## Trader's view

The new trading week had begun at a moderate pace. Though market has all the positive factors existing, such as record oil prices. However, due to national holiday in US and England – market players were not as keen to “shake” the market – as quotes dynamics of most of liquid stocks formed about 1-1.5%. The weakest dynamics were demonstrated by stocks of Sberbank and Norilsk Nickel. The bank announced its financial results of first four months 2008, indicating weak operations of April. This fact could have been negatively taken by the market, whilst Sberbank's quotes dropped down.

## Main news

### S&P upgrades Rosneft's rating to BBB-

Standard & Poor's rating agency has upped Rosneft's rating from BB+ to BBB-, reports Interfax. Interfax also cites the forecast to set at “stable”.

## Other news

### ➤ Cabinet approved cut of oil industry's taxes.

Tax holidays on oil extraction tax over shelf are to form 10 and 15 years, reported RF's vice-minister of finance – Sergei Shatalov, during briefing after cabinet meeting, says Interfax.

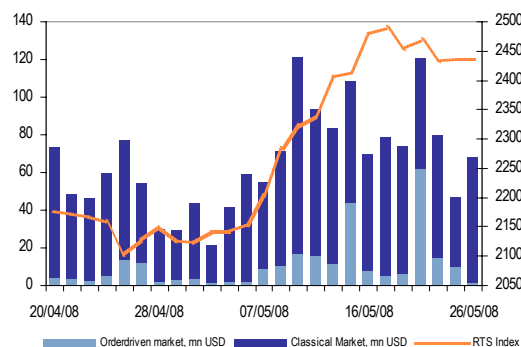
## Market estimates

### Main indicators and indices

|                 | Close       | Change, pt. | Change, % |       |       |        |
|-----------------|-------------|-------------|-----------|-------|-------|--------|
|                 |             |             | day       | week  | month | year   |
| RTS Index       | ▲ 2,436.56  | 1.36        | 0.06      | -2.06 | 14.44 | 35.76  |
| MICEX Index     | ▼ 1,894.91  | -14.76      | -0.77     | -3.13 | 13.55 | 19.82  |
| USD / RUR       | ▼ 23.51     | -0.03       | -0.13     | -1.16 | -0.47 | -9.27  |
| EUR / RUR       | ▲ 37.08     | 0.01        | 0.02      | 0.49  | 0.41  | 6.54   |
| EUR / USD       | ▲ 1.58      | 0.00        | 0.04      | 1.68  | 0.90  | 17.24  |
| Dow Jones Index | - 12,479.63 | -           | -         | -4.21 | -3.20 | -7.61  |
| NASDAQ          | - 2,444.67  | -           | -         | -2.84 | 0.90  | -4.40  |
| FTSE 100        | - 6,087.30  | -           | -         | -4.54 | -0.07 | -7.35  |
| Nikkei 225      | ▼ 13,690.19 | -322.01     | -2.30     | -4.06 | -1.25 | -21.69 |
| MSCI EM         | ▼ 1,193.38  | -14.58      | -1.21     | -4.51 | 0.37  | 18.76  |

Source: Bloomberg, Estimation: Veles Capital

### RTS index vs. trade volume



### Resource markets

|                        | Close, USD | Change, USD | Change, % |       |        |        |
|------------------------|------------|-------------|-----------|-------|--------|--------|
|                        |            |             | day       | week  | month  | year   |
| Brent, USD / bbl       | ▲ 130.63   | 0.48        | 0.37      | 6.10  | 12.34  | 83.44  |
| Urals, USD / bbl       | ▲ 126.48   | 0.59        | 0.47      | 6.34  | 13.08  | 87.68  |
| Gold, USD / ounce      | ▲ 951.21   | 3.91        | 0.41      | 2.70  | 4.45   | 37.77  |
| Palladium, USD / ounce | ▲ 465.00   | 1.03        | 0.22      | 1.41  | 2.59   | 20.07  |
| Copper, USD / ton      | - 8,180    | -           | -         | -1.62 | -4.61  | 13.61  |
| Nickel, USD / ton      | - 24,100   | -           | -         | -7.66 | -18.31 | -47.95 |

Source: Bloomberg, Estimation: Veles Capital

### Russian share quotes

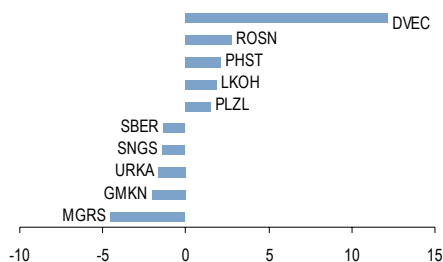
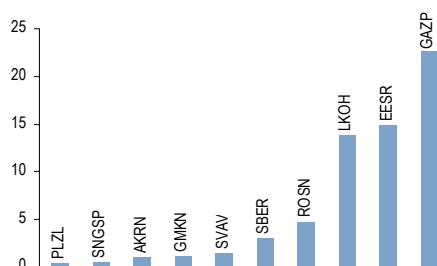
|                | Close, USD | Change, USD | Change, % |       |       |        |
|----------------|------------|-------------|-----------|-------|-------|--------|
|                |            |             | day       | week  | month | year   |
| UES            | ▲ 1.065    | 0.006       | 0.57      | -3.36 | 18.80 | -15.27 |
| VTB            | - 0.004    | -           | -         | -3.76 | 7.05  | -      |
| Polyus-Gold    | ▲ 67.00    | 1.000       | 1.52      | -5.63 | 25.23 | 66.25  |
| NorNickel      | ▼ 293.00   | -6.000      | -2.01     | -2.33 | 5.02  | 60.11  |
| Rostelecom     | - 11.39    | -           | -         | -2.23 | -2.23 | 28.70  |
| MTS            | ▼ 12.84    | -0.110      | -0.85     | 1.90  | 6.34  | 39.57  |
| Sberbank       | ▼ 3.590    | -0.050      | -1.37     | -4.01 | 13.07 | -0.28  |
| LUKOIL         | ▲ 109.10   | 2.000       | 1.87      | -2.94 | 21.22 | 45.47  |
| Gazprom Neft   | - 7.150    | -           | -         | -0.69 | 19.17 | 88.16  |
| Surgutneftegas | ▼ 1.224    | -0.018      | -1.41     | -0.85 | 23.69 | 7.41   |
| Gazprom        | ▼ 15.36    | -0.050      | -0.32     | -0.58 | 15.75 | 66.05  |
| Tatneft        | - 7.850    | -           | -         | -0.63 | 20.03 | 77.40  |
| Rosneft        | ▲ 11.740   | 0.310       | 2.71      | 2.98  | 19.55 | 46.20  |

Source: RTS web page, Estimation: Veles Capital

### Veles Management MC Unit investment trusts

|                                 | Net asset value, RUR | Share price, RUR | Change, % |       |      | Since interest per annum formation, % |
|---------------------------------|----------------------|------------------|-----------|-------|------|---------------------------------------|
|                                 |                      |                  | day       | month | year |                                       |
| VELES Capital                   | ▼ 11,387,323         | 1,218.97         | -0.58     | 8.84  | 8.05 | 10.18                                 |
| VELES Capital - Selected Shares | ▼ 10,561,262         | 1,028.18         | -0.90     | 10.67 | 3.10 | 1.86                                  |
| VELES Capital - Bonds           | ▲ 24,382,692         | 1,007.59         | 0.03      | 0.71  | -    | 2.80                                  |

Source: Veles Management MC

**Rise and fall leaders, %**

**Leaders on turnover volumes in RTS, mn USD**

**RTS index support and resistance levels**

|   | support | resistance |
|---|---------|------------|
| 1 | 2,415.6 | 2,444.6    |
| 2 | 2,400.0 | 2,458.5    |
| 3 | 2,343.5 | 2,493.4    |

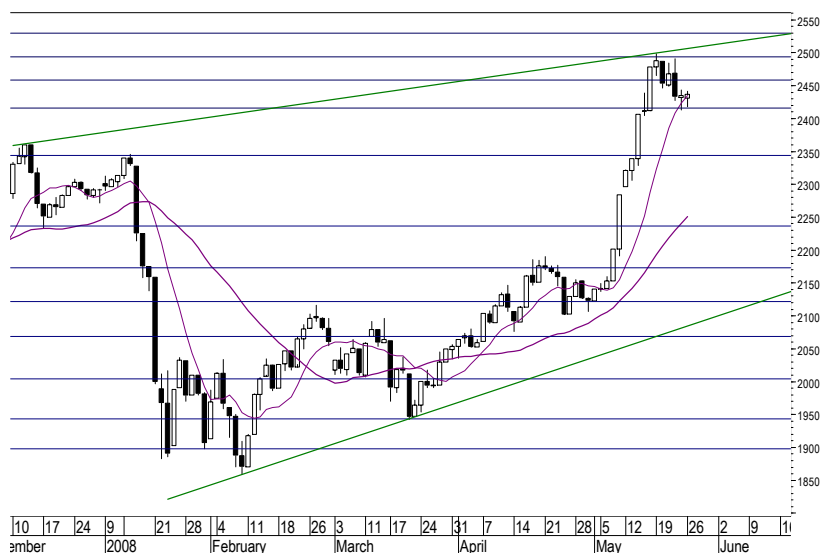
## Trader's view

The new trading week had begun at a moderate pace. Though market has all the positive factors existing, such as record oil prices. However, due to national holiday in US and England – market players were not as keen to “shake” the market – as quotes dynamics of most of liquid stocks formed about 1-1.5%. The weakest dynamics were demonstrated by stocks of Sberbank and Norilsk Nickel. The bank announced its financial results of first four months 2008, indicating weak operations of April. This fact could have been negatively taken by the market, whilst Sberbank's quotes dropped down.

RTS of the day rose +0.06% and formed 2436.56 points. The utmost support of index was brought by: LUKOIL (+1.87%, Rosneft (+2.71%) and Polyus Gold (+1.52%). Opposite push was formed through: Sberbank (-1.37%), Norilsk Nickel (-2.01%) and Gazprom (-0.32%).

Index' turnover of Monday was relatively high and formed 66.1 mn USD. Top deals were made on stocks of Gazprom (22.6 mn USD), UES (14.9 mn USD) and Sberbank (13.8 mn USD).

The external background is currently good for Russian stock market. “Black gold's” quotes are at its highest, as Asian markets enjoyed a sound dynamics this morning. Today's target level of index is 2458 points.

**RTS index support and resistance levels**


*Company profile*

|                                 |                |
|---------------------------------|----------------|
| Last price, USD                 | <b>11.740</b>  |
| Market capitalization, mn USD   | <b>124,423</b> |
| Ticker                          | <b>ROSN</b>    |
| Fair value, USD                 | <b>11.330</b>  |
| Undervaluation, Overvaluation % | <b>-3.49</b>   |
| <b>Recommendation:</b>          |                |
| <b>BUY</b>                      |                |

**Oil & Gas**
**Rosneft**
**S&P upgrades Rosneft's rating to BBB-.**

Standard & Poor's rating agency has upped Rosneft's rating from BB+ to BBB-, reports Interfax. Interfax also cites the forecast to set at "stable".

S&P's credit analyst – Elena Anankina reflects rating decision upon improvement of Rosneft's creditworthiness, thanks to reinforcement of business, growth of credit capacity and gradual development of liquidity.

Press-release indicates that some progress over financing short-term debt, gained to finance latter large purchases – smoothes primary negative rating factor.

Anankina underlines that Rosneft's rating is still based on own features of company's creditworthiness, which are estimated at BB+ by S&P, including additional premium per one step, taking into account emergency help provided by RF government.

S&P also notes other supporting factors of Rosneft's rating: enormous registered oil reserves of 13.5 bn barrels of oil equivalent as of late 2007 and large scale extraction of 2,234 bn barrels per day in 4Q 2007. Rosneft is currently a single Russian company to have its growth rate growing over existing deposits (+7.8% excluding purchases of 2007) and to have its own serious potential for further growth.

Do remember – that corrected debt of Rosneft as of late 2007 had formed 29.2 bn USD, 15.5 bn USD from which were held within short-term debt.

We think that S&P's decision on improvement of Rosneft's credit rating is rather expected and does not reflect positive processes, currently ongoing in the company. Considering the supportive conditions at oil and oil products market, which are currently evident over Russian and international markets, on par with a more and solid financial condition of Rosneft. And the latest batch of reports underlines it clearly. Therefore – S&P's decision was just a matter of time. As of late 2008 we forecast a significant expansion Rosneft's free cash flow, which on its part would allow the company for a much easier refinancing of short-term debt.

*Dmitry Lyutyagin*  
*DLyutyagin@veles-capital.ru*

## Oil & Gas

### **Cabinet approved cut of oil industry's taxes.**

Tax holidays on oil extraction tax over shelf are to form 10 and 15 years, reported RF's vice-minister of finance – Sergei Shatalov, during briefing after cabinet meeting, says Interfax.

According to Shatalov, the companies developing the offshore deposits will have the tax holidays of 10 or 15 years, depending on the type of license. If certain project covers only extraction, then special tax term would form 10 years and if project covers exploration and extraction, then tax holidays are set to form 15 years.

Thus, he mentioned that the second tax holidays limitation is the oil production level on each of the deposits – set at less than 35 mn t. And whenever happens first, would determine until when special taxes would be applied.

Concerning the deposits on Yamal and Timano-Pechersky basin, Shatalov said that decision was made to apply tax holidays in these Regions for 7 years. He also said that a second condition on oil extraction rate would be introduced later on. The rate will be defined during the next 10 days and the proposal is to be examined by the government.

Let us take a closer look upon the tax-free allowance on mining tax of oil from 9 USD to 15 USD per barrel; Shatalov noted that budget shortfalls are to form 104-105 bn RUR in just a year. Aside of this – he indicates the decision on approval of mining tax of oil rate cuts at depleted deposits (which exhausted over 80% of their respective reserves) would lead to a decrease of budget down at additional 35 bn RUR. All tax benefits he estimated in 175 bn RUR for oil industry's economy.

Shatalov also reminded that all the decisions concerning tax holidays and mining tax are to be applied in the start of 2009. According to Putin — the prime minister, all legislations should be examined by State Duma during the spring session.

We see the results of RF's cabinet as positive for oil & gas industry. And according to the government this is not the final list of tax remissions. In the near future the export tax reconsideration is possible.

*Dmitry Lyutyagin*  
*DLyutyagin@veles-capital.ru*

## Trade results

|                                   | Ticker                       | Price, USD | Change, USD | Change, % |       |        | Current year, USD |        | Volume, USD | MCAP, mn USD | Fair price, USD | Potential, % | Recommendation |         |        |                 |
|-----------------------------------|------------------------------|------------|-------------|-----------|-------|--------|-------------------|--------|-------------|--------------|-----------------|--------------|----------------|---------|--------|-----------------|
|                                   |                              |            |             | day       | week  | month  | from Jan 1        | year   |             |              |                 |              |                | min     | max    |                 |
| <b>Oil and Gas</b>                |                              |            |             |           |       |        |                   |        |             |              |                 |              |                |         |        |                 |
|                                   | Bashneft                     | - BANE     | 15.775      | -         | -     | 8.79   | 21.35             | -5.26  | 19.96       | 12.860       | 16.400          | -            | 3.037          | -       | -      | HOLD            |
|                                   | Bashneft, pref.              | - BANEP    | 10.1750     | -         | -     | 7.67   | 8.53              | -7.29  | 13.06       | 9.1000       | 10.8000         | -            | -              | -       | -      | HOLD            |
|                                   | Gazprom                      | ▼ GAZP     | 15.360      | -0.050    | -0.32 | -0.58  | 15.75             | 9.01   | 66.05       | 11.410       | 15.660          | 22,565,450   | 363,625        | 16,250  | 5.79   | BUY             |
|                                   | Gazprom Neft                 | - SIBN     | 7.1500      | -         | -     | -0.69  | 19.17             | 12.60  | 88.16       | 5.0000       | 7.2000          | -            | 33,900         | 6,2560  | -12.50 | HOLD            |
|                                   | LUKOIL                       | ▲ LKOH     | 109.100     | 2.000     | 1.87  | -2.94  | 21.22             | 25.40  | 45.47       | 64.250       | 113.200         | 13,810,507   | 92,796         | 109,270 | 0.16   | BUY             |
|                                   | NOVATEK                      | - NVTK     | 8.4750      | -         | -     | -6.87  | 13.76             | 13.00  | 80.13       | 6.5000       | 9.1000          | -            | 25,733         | 9.1700  | 8.20   | BUY             |
|                                   | RITEK                        | - RITK     | 8.5250      | -         | -     | 0.29   | 5.90              | -16.01 | -12.11      | 7.0000       | 9.9000          | -            | 1,234          | -       | -      | -               |
|                                   | Rosneft                      | ▲ ROSN     | 11.7400     | 0.3100    | 2.71  | 2.98   | 19.55             | 22.70  | 46.20       | 6.6700       | 11.8600         | 4,780,143    | 124,423        | 11,3300 | -3.49  | BUY             |
|                                   | Surgutneftegas               | ▼ SNGS     | 1.2245      | -0.0175   | -1.41 | -0.85  | 23.69             | -1.25  | 7.41        | 0.8650       | 1.2980          | 135,100      | 48,329         | -       | -      | UNDER REVISION  |
|                                   | Surgutneftegas, pref.        | - SNGSP    | 0.5950      | -         | -     | -2.46  | 22.68             | -8.18  | -17.95      | 0.4340       | 0.6480          | 595,000      | -              | -       | -      | UNDER REVISION  |
|                                   | Tatneft                      | - TATN     | 7.8500      | -         | -     | -0.63  | 20.03             | 29.75  | 77.40       | 4.7500       | 8.0100          | 156,500      | 17,660         | -       | -      | HOLD            |
|                                   | Tatneft, pref.               | - TATNP    | 3.7750      | -         | -     | 1.34   | 11.03             | 2.03   | 44.36       | 2.7000       | 3.7500          | -            | -              | -       | -      | HOLD            |
|                                   | TNK-BP Holding               | ▼ tnbp     | 2.0900      | -0.0200   | -0.95 | -4.57  | 7.73              | -6.28  | 19.43       | 1.5200       | 2.2000          | 71,060       | 33,862         | 2,5950  | 24.16  | BUY             |
|                                   | TNK-BP Holding, pref.        | ▼ tnbp     | 1.6500      | -0.0500   | -2.94 | -8.84  | -4.35             | -13.16 | -5.98       | 1.4220       | 1.8500          | 3,300        | -              | 2,3410  | 41.88  | BUY             |
|                                   | Transneft, pref.             | - TRNFP    | 1.455.0     | -         | -     | -3.64  | 13.23             | -27.07 | -9.63       | 1,215.0      | 2,007.0         | -            | 9,049          | 2,580.0 | 77.32  | BUY             |
| <b>Energy</b>                     |                              |            |             |           |       |        |                   |        |             |              |                 |              |                |         |        |                 |
|                                   | Bashkirenergo                | - BEGY     | 1.7750      | -         | -     | 1.43   | -4.44             | -16.27 | -13.31      | 1.5000       | 2.1000          | -            | 1,915          | -       | -      | -               |
|                                   | Bashkirenergo, pref.         | - BEGYP    | 1.2800      | -         | -     | -0.58  | -                 | 7.56   | -1.92       | 1.1750       | 1.1750          | -            | -              | -       | -      | -               |
|                                   | Hidro-WGC                    | ▼ HYDR     | 0.0909      | -0.0009   | -0.98 | 1.56   | 20.40             | -      | -           | 0.0687       | 0.0930          | 237,840      | 17,804         | -       | -      | -               |
|                                   | Irkutskenergo                | - IRGZ     | 1.0000      | -         | -     | -3.85  | -14.93            | -15.97 | 3.09        | 0.9700       | 1.1510          | 50,000       | 4,767          | -       | -      | -               |
|                                   | WGC-1                        | - OGKA     | 0.0895      | -         | -     | -2.45  | 5.92              | -27.24 | -           | 0.0795       | 0.1225          | -            | 3,996          | 0.1308  | 46.15  | BUY             |
|                                   | WGC-2                        | - OGKB     | 0.0952      | -         | -     | 3.53   | 15.45             | -38.15 | -23.80      | 0.0825       | 0.1500          | -            | 3,118          | -       | -      | UNDER REVISION  |
|                                   | WGC-3                        | - OGKC     | 0.1125      | -         | -     | -      | 7.14              | -25.12 | -33.78      | 0.1050       | 0.1450          | -            | 5,342          | -       | -      | UNDER REVISION  |
|                                   | WGC-4                        | - OGKD     | 0.0875      | -         | -     | -5.41  | -9.33             | -34.21 | -8.85       | 0.0880       | 0.1335          | -            | 5,514          | 0.1020  | 16.57  | HOLD            |
|                                   | WGC-5                        | - OGKE     | 0.1160      | -         | -     | 0.87   | 17.77             | -33.79 | -17.29      | 0.0955       | 0.1795          | -            | 4,103          | 0.2123  | 83.02  | BUY             |
|                                   | WGC-6                        | - OGKF     | 0.0835      | -         | -     | -1.76  | -1.76             | -34.25 | -           | 0.0782       | 0.1250          | -            | 2,694          | -       | -      | UNDER REVISION  |
|                                   | UES                          | ▲ EESR     | 1.0650      | 0.0060    | 0.57  | -3.36  | 18.80             | -18.95 | -15.27      | 0.8470       | 1.3400          | 14,862,652   | 45,650         | 1,5688  | 47.31  | BUY             |
|                                   | UES, pref.                   | - EESRP    | 0.9350      | -         | -     | -3.91  | 17.91             | -18.34 | -13.82      | 0.7600       | 1.1710          | 93,500       | -              | 1,3335  | 42.62  | BUY             |
|                                   | TGC-1                        | - TGKA     | 0.0014      | -         | -     | 0.37   | -0.37             | 3.83   | -1.81       | 0.0012       | 0.0014          | -            | 5,218          | 0.0017  | 25.46  | BUY             |
|                                   | TGC-2                        | - TGKB     | 0.0009      | -         | -     | -1.05  | -1.57             | -6.00  | -11.32      | 0.0008       | 0.0012          | -            | 1,042          | 0.0015  | 59.57  | BUY             |
|                                   | TGC-2, pref.                 | - TGKBP    | 0.0007      | -         | -     | -      | -                 | -5.23  | 11.54       | -            | -               | -            | -              | 0.0011  | 51.72  | BUY             |
|                                   | TGC-3 (Mosenergo)            | - MSNG     | 0.1860      | -         | -     | -2.75  | -13.49            | -21.85 | -16.40      | 0.1700       | 0.2460          | -            | 7,393          | -       | -      | REDUCE          |
|                                   | TGC-4                        | - TGKD     | 0.0010      | -         | -     | -0.48  | -0.48             | -16.94 | -6.79       | 0.0010       | 0.0012          | -            | 1,407          | -       | -      | -               |
|                                   | TGC-4, pref.                 | - TGKDP    | 0.0006      | -         | -     | 0.83   | 1.67              | -15.28 | -31.07      | 0.0005       | 0.0006          | -            | -              | -       | -      | -               |
|                                   | TGC-5                        | - TGKE     | 0.0008      | -         | -     | 2.70   | -1.30             | -16.02 | -44.53      | 0.0007       | 0.0010          | -            | 935            | 0.0012  | 57.89  | BUY             |
|                                   | TGC-6                        | - TGKF     | 0.0009      | -         | -     | 2.27   | -1.10             | -21.40 | -18.18      | 0.0009       | 0.0012          | -            | 1,161          | 0.0009  | -      | REDUCE          |
|                                   | TGC-7                        | - TGKG     | 0.0870      | -         | -     | -13.43 | -3.33             | -20.18 | -           | 0.0850       | 0.1095          | -            | 2,608          | -       | -      | -               |
|                                   | TGC-8                        | - TGKH     | 0.0016      | -         | -     | 0.32   | 0.32              | 11.07  | 53.96       | 0.0013       | 0.0016          | -            | 3,206          | 0.0009  | -42.12 | SELL            |
|                                   | TGC-9                        | - TGKI     | 0.0004      | -         | -     | 18.46  | 16.67             | 20.31  | 30.51       | 0.0003       | 0.0003          | -            | 3,012          | -       | -      | -               |
|                                   | TGC-10                       | ▲ TGKJ     | 4.5700      | 0.0200    | 0.44  | 1.11   | 1.56              | 11.74  | 14.25       | 3.5000       | 4.5700          | 45,700       | 4,016          | -       | -      | -               |
|                                   | TGC-11                       | - TGKK     | 0.0013      | -         | -     | -5.80  | -3.35             | -19.75 | -           | 0.0012       | 0.0016          | -            | 667            | -       | -      | -               |
|                                   | TGC-12 (Kuzbasenergo)        | - KZBE     | 0.0222      | -         | -     | -11.20 | -                 | -99.19 | -99.35      | 2.5000       | 2.8100          | -            | 1,568          | -       | -      | -               |
|                                   | TGC-13                       | - TGKM     | 0.0082      | -         | -     | 0.62   | -3.26             | -22.87 | -19.77      | 0.0081       | 0.0102          | -            | 1,297          | -       | -      | -               |
|                                   | TGC-14                       | - TGKN     | 0.0003      | -         | -     | -26.97 | -5.80             | -4.41  | -20.73      | 0.0003       | 0.0003          | -            | 253            | -       | -      | -               |
| <b>Nonferrous metallurgy</b>      |                              |            |             |           |       |        |                   |        |             |              |                 |              |                |         |        |                 |
|                                   | BMSK                         | - bmsk     | 2.3500      | -         | -     | 31.84  | 36.23             | -4.08  | -9.62       | 1.6850       | 1.6850          | -            | 12             | 4.5900  | 95.32  | SPECULATIVE BUY |
|                                   | BMSK, pref.                  | - bmskp    | 2.1500      | -         | -     | -      | -                 | -      | -           | 0.9500       | 0.9500          | -            | -              | 3.4400  | 60.00  | HOLD            |
|                                   | VSMPO                        | - VSMPO    | 213.50      | -         | -     | -1.39  | -2.51             | -29.30 | -28.36      | 214.50       | 314.00          | -            | 2,462          | -       | -      | HOLD            |
|                                   | Norisk Nickel                | ▼ GMKN     | 293.00      | -6.00     | -2.01 | -2.33  | 5.02              | 10.57  | 60.11       | 203.00       | 316.50          | 1,108,750    | 55,854         | 314.68  | 7.40   | BUY             |
|                                   | Safyanovskaya med            | - sfmd     | 6.0000      | -         | -     | -      | -                 | -35.14 | -58.62      | 6.0000       | 7.0000          | -            | 12             | 4.7300  | -21.17 | SELL            |
|                                   | Sredneuralsky MPZ            | - sumz     | 17.000      | -         | -     | -2.30  | 3.03              | -8.48  | -28.42      | 16.500       | 18.400          | -            | 86             | 36.550  | 115.00 | SPECULATIVE BUY |
|                                   | Uralskoelektromed            | - uelm     | 114.50      | -         | -     | -1.93  | 0.44              | 0.79   | -4.38       | 100.00       | 121.00          | -            | 581            | 126.38  | 10.38  | ACCUMULATE      |
|                                   | Ufaleynickel                 | - ufal     | 8.3500      | -         | -     | -0.60  | 3.09              | 7.74   | -19.71      | 7.5000       | 7.5000          | -            | 225            | 6.6300  | -20.60 | REDUCE          |
|                                   | Chelyabinsk Zink Plant       | - CHZN     | 10.15       | -         | -     | -2.17  | -0.98             | -9.58  | -91.89      | 9.30         | 12.15           | -            | 550            | 22.53   | 121.97 | BUY             |
|                                   | Yuzhuralnickel               | - unkl     | 1,155.0     | -         | -     | -5.91  | 0.17              | -17.50 | 38.32       | 1,120.0      | 1,300.0         | 54,885       | 693            | 463.4   | -59.88 | ACCUMULATE      |
|                                   | Electrozinc                  | - eltz     | 98.50       | -         | -     | -1.50  | 3.14              | -7.94  | -21.83      | 95.00        | 110.00          | -            | 138            | -       | -      | -               |
| <b>Ferrous metallurgy (Steel)</b> |                              |            |             |           |       |        |                   |        |             |              |                 |              |                |         |        |                 |
|                                   | Ashinsky Metallurgy Plant    | - AMEZ     | 0.7350      | -         | -     | -4.55  | -2.65             | -22.63 | 30.09       | 0.7400       | 0.9700          | -            | 366            | 0.9400  | 27.89  | BUY             |
|                                   | Evrast**                     | ▼ EVR      | 107.250     | -3.250    | -2.94 | -14.03 | 5.15              | 38.39  | 214.06      | 62.000       | 131.250         | 252,903,100  | 38,066         | 103.210 | -3.77  | ACCUMULATE      |
|                                   | Mechel                       | - MTLR     | 42.950      | -         | -     | -10.52 | -3.48             | 59.07  | 286.07      | 20.000       | 45.800          | -            | 17,879         | 28.680  | -33.22 | BUY             |
|                                   | MMC                          | - MAGN     | 1.2550      | -         | -     | -11.93 | -6.34             | -3.46  | 34.22       | 1.0500       | 1.4200          | -            | 14,024         | 1.7530  | 39.68  | BUY             |
|                                   | NLMC                         | - NLMK     | 4.9000      | -         | -     | -10.91 | 0.51              | 20.84  | 85.61       | 3.4300       | 5.3000          | -            | 29,367         | 5.3600  | 9.39   | ACCUMULATE      |
|                                   | Severstal                    | - CHMF     | 25.050      | -         | -     | -8.58  | 0.20              | 9.87   | 93.44       | 20.000       | 28.000          | -            | 25,243         | 27.520  | 9.86   | BUY             |
|                                   | Chelyabinsk Metallurgy Plant | - CHMK     | 400.50      | -         | -     | -6.86  | 6.80              | 8.98   | 125.63      | 330.00       | 450.00          | -            | 1,266          | -       | -      | -               |
|                                   | Chusovskoy Metallurgy Plant  | - chmz     | 123.750     | -         | -     | 0.61   | 3.99              | 7.61   | 60.45       | 113.000      | 124.800         | -            | 288            | -       | -      | -               |
| <b>Precious metals</b>            |                              |            |             |           |       |        |                   |        |             |              |                 |              |                |         |        |                 |
|                                   | Buryatzoloto                 | - BRZL     | 20.125      | -         | -     | -      | -                 | 11.81  | 54.81       | 19.000       | 22.000          | -            | 141            | 26.690  | 32.62  | SPECULATIVE BUY |
|                                   | Lenzoloto                    | - lnzl     | 32.500      | -         | -     | 6.56   | -27.78            | -43.48 | 8.15        | 40.000       | 60.000          | -            | 37             | 34.210  | 5.26   | HOLD            |
|                                   | Polymetal                    | - PMTL     | 8.8750      | -         | -     | -1.93  | 8.23              | 28.25  | 43.15       | 7.0000       | 9.3500          | -            | 2,796          | 8.2800  | -6.70  | HOLD            |
|                                   | Polys-Gold                   | ▲ PLZL     | 67.000      | 1.000     | 1.52  | -5.63  | 25.23             | 45.97  | 66.25       | 46.500       | 80.000          | 402,000      | 12,772         | 5.180   | -14.66 | HOLD            |
|                                   | Susumanzoloto                | - sysy     | 28.000      | -         | -     | -      | -                 | -6.67  | -37.78      | -            | -               | -            | 25             | 55.270  | 97.39  | ACCUMULATE      |

Source: RTS website, Bloomberg (\* - NASDAQ, \*\* - LME, rest - RTS) Estimation: Veles Capital

## Trade results

|                           | Ticker                             | Price, USD | Change, USD | Change, % |       |       |            | Current year, USD |        | Volume, USD | MCAP, mn USD | Fair price, USD | Potential, % | Recommendation |        |                 |
|---------------------------|------------------------------------|------------|-------------|-----------|-------|-------|------------|-------------------|--------|-------------|--------------|-----------------|--------------|----------------|--------|-----------------|
|                           |                                    |            |             | day       | week  | month | from Jan 1 | year              | min    |             |              |                 |              |                | max    |                 |
| <b>Coal industry</b>      |                                    |            |             |           |       |       |            |                   |        |             |              |                 |              |                |        |                 |
|                           | Belon                              | - BLNG     | 176.000     | -         | -     | 3.23  | 12.46      | 87.23             | 395.77 | 93.000      | 185.000      | -               | 2,024        | 91.610         | -47.95 | SPECULATIVE BUY |
|                           | Vorkutaugol                        | - voug     | 181.50      | -         | -     | -0.27 | -7.63      | -9.25             | 3.71   | 190.000     | 244.000      | -               | 611          | 318.92         | 75.71  | SPECULATIVE BUY |
|                           | Vorkutaugol, pref                  | - vougp    | 181.50      | -         | -     | 1.26  | -1.22      | 0.83              | 3.71   | 160.000     | 187.000      | -               | -            | 255.14         | 40.57  | SPECULATIVE BUY |
|                           | Kuzbassrazrezugol                  | ▼ kzru     | 0.8400      | -0.0150   | -1.75 | -6.67 | 1.20       | 95.58             | 115.38 | 0.4400      | 0.9000       | 13,649          | 5,152        | 0.3800         | -54.76 | HOLD            |
|                           | Raspadskaya                        | - RASP     | 9.4500      | -         | -     | -4.55 | 6.78       | 45.38             | 321.88 | 5.4000      | 10.3000      | -               | 7,378        | 10.6500        | 12.70  | ACCUMULATE      |
|                           | Yuzny Kuzbass                      | - UKUZ     | 149.250     | -         | -     | -4.88 | 4.74       | 176.39            | 484.15 | 56.000      | 158.900      | -               | 5,389        | 50.380         | -66.24 | REDUCE          |
| <b>Pipe industry</b>      |                                    |            |             |           |       |       |            |                   |        |             |              |                 |              |                |        |                 |
|                           | Almetievsk Pipe Plant              | - atza     | 10.750      | -         | -     | -     | -          | -8.51             | -8.51  | -           | -            | -               | 32           | -              | -      | UNDER REVISION  |
|                           | Vyksa Metallurgy Plant             | - vsmz     | 1,725.5     | -         | -     | 0.47  | 5.99       | -18.42            | 28.29  | 1,700.0     | 2,080.0      | -               | 3,248        | -              | -      | UNDER REVISION  |
|                           | Pervouralsk New Pipe Plant         | - PNTZ     | 30.750      | -         | -     | 11.82 | 8.85       | -1.60             | -7.24  | 28.975      | 32.200       | -               | 748          | -              | -      | UNDER REVISION  |
|                           | Seversky Pipe Plant                | - SVTZ     | 13.300      | -         | -     | -     | -3.62      | -19.64            | 22.86  | 13.000      | 15.800       | -               | 640          | 15.400         | 15.79  | ACCUMULATE      |
|                           | Sinarsky Pipe Plant                | - SNTZ     | 107.50      | -         | -     | -0.92 | -0.92      | -23.21            | -1.60  | 110.000     | 138.500      | -               | 677          | -              | -      | UNDER REVISION  |
|                           | Taganrog Metallurgy Plant          | - TAMZ     | 1.0000      | -         | -     | -     | -          | -18.96            | -18.37 | 1.0000      | 1.1000       | -               | 462          | 1.1300         | 13.00  | HOLD            |
|                           | TMK                                | - TRMK     | 8.2000      | -         | -     | -0.30 | 9.33       | -24.94            | -10.38 | 7.1000      | 10.7000      | -               | 7,159        | 9.3800         | 14.39  | HOLD            |
|                           | Chelyabinsk Pipe Plant             | - CHEP     | 4.2250      | -         | -     | -2.87 | -0.71      | -0.71             | 4.58   | 3.8500      | 4.5500       | -               | 1,996        | -              | -      | UNDER REVISION  |
| <b>Telecommunications</b> |                                    |            |             |           |       |       |            |                   |        |             |              |                 |              |                |        |                 |
|                           | Volgatelecom                       | - NNSI     | 4.5700      | -         | -     | -4.29 | 0.44       | -22.15            | -19.12 | 4.0000      | 5.9100       | -               | 1,379        | 6.0110         | 31.53  | BUY             |
|                           | Volgatelecom, pref.                | - NNSIP    | 3.1050      | -         | -     | 0.49  | -1.43      | -25.18            | -22.08 | 2.9000      | 4.1800       | -               | -            | 4.5083         | 45.19  | BUY             |
|                           | Vimpelcom*                         | ▼ VIP      | 34.870      | -0.510    | -1.44 | 0.35  | 18.77      | -16.18            | 68.58  | 28.510      | 44.390       | 80,491,728      | 35,764       | 30.800         | -11.67 | HOLD            |
|                           | Dalsvyaz                           | - ESPK     | 4.5000      | -         | -     | -6.25 | -1.85      | -15.09            | -8.86  | 4.4800      | 5.7000       | 92,000          | 549          | 7.4457         | 65.46  | BUY             |
|                           | Dalsvyaz, pref.                    | - ESPKP    | 3.8250      | -         | -     | -     | -1.29      | -14.53            | -17.74 | 3.7000      | 4.2000       | -               | -            | 5.5812         | 45.91  | BUY             |
|                           | Comstar-UTS                        | - CMST     | 10.4500     | -         | -     | -5.00 | 4.50       | -4.44             | 40.27  | 10.3000     | 10.5000      | -               | 4,367        | 13.4800        | 29.00  | BUY             |
|                           | MGTS                               | - MGTS     | 36.400      | -         | -     | -     | 0.14       | 0.28              | 33.82  | 32.000      | 34.600       | -               | 3,422        | -              | -      | HOLD            |
|                           | MGTS, pref.                        | - MGTSP    | 32.350      | -         | -     | 10.79 | 8.19       | 0.62              | 30.97  | 28.800      | 31.300       | -               | -            | -              | -      | HOLD            |
|                           | MTS                                | ▼ MTSS     | 12.8400     | -0.1100   | -0.85 | 1.90  | 6.34       | -16.35            | 39.57  | 11.8000     | 15.7000      | 263,240         | 25,594       | 16.2900        | 26.87  | BUY             |
|                           | Rostelecom                         | - RTKM     | 11.3900     | -         | -     | -2.23 | -2.23      | -3.96             | 28.70  | 10.4000     | 12.4400      | 108,205         | 8,855        | 4.1300         | -63.74 | SELL            |
|                           | Rostelecom, pref.                  | - RTKMP    | 2.2850      | -         | -     | -0.65 | 8.29       | -21.88            | -20.52 | 2.0000      | 2.8500       | -               | -            | 3.1000         | 35.67  | ACCUMULATE      |
|                           | North-West Telecom                 | - SPTL     | 1.2435      | -         | -     | -0.12 | -0.92      | -27.70            | -26.85 | 1.1400      | 1.7000       | -               | 1,321        | 1.5002         | 20.64  | HOLD            |
|                           | North-West Telecom, pref.          | - SPTLP    | 0.9000      | -         | -     | -2.44 | -22.04     | -26.83            | -17.88 | 0.8700      | 1.2150       | 45,000          | -            | 1.1251         | 25.01  | HOLD            |
|                           | Sibirtelecom                       | ▲ ENCO     | 0.0935      | 0.0002    | 0.21  | -2.60 | 3.89       | -22.08            | -17.26 | 0.0780      | 0.1170       | 46,750          | 1,359        | 0.1140         | 21.93  | BUY             |
|                           | Sibirtelecom, pref.                | - ENCOP    | 0.0602      | -         | -     | -1.07 | -0.41      | -25.16            | -24.21 | 0.0595      | 0.0670       | -               | -            | 0.0855         | 41.91  | BUY             |
|                           | Uralsvyazinform                    | - URSI     | 0.0530      | -         | -     | -2.75 | 7.07       | -16.86            | -15.87 | 0.0462      | 0.0635       | -               | 1,955        | 0.0573         | 8.11   | BUY             |
|                           | Uralsvyazinform, pref.             | - URSIP    | 0.0310      | -         | -     | -3.88 | 3.33       | -27.06            | -29.38 | 0.0295      | 0.0418       | -               | -            | 0.0430         | 38.71  | ACCUMULATE      |
|                           | CenterTelecom                      | - ESMO     | 0.6875      | -         | -     | 0.36  | 1.10       | -26.23            | -25.27 | 0.6500      | 0.9320       | -               | 1,348        | 1.0357         | 50.65  | ACCUMULATE      |
|                           | CenterTelecom, pref.               | - ESMOP    | 0.5000      | -         | -     | 3.09  | -4.76      | -19.68            | -12.28 | 0.4800      | 0.6375       | -               | -            | 0.7768         | 55.36  | BUY             |
|                           | SouthTelecom                       | - KUBN     | 0.1532      | -         | -     | -0.33 | 5.69       | -22.60            | -26.14 | 0.1345      | 0.2020       | -               | 566          | 0.2565         | 67.37  | BUY             |
|                           | SouthTelecom, pref.                | - KUBNP    | 0.1160      | -         | -     | 1.31  | 3.11       | -19.86            | -18.31 | 0.1175      | 0.1450       | -               | -            | 0.1848         | 59.31  | BUY             |
| <b>Machinery</b>          |                                    |            |             |           |       |       |            |                   |        |             |              |                 |              |                |        |                 |
|                           | AvtoVAZ                            | - AVAZ     | 1.7700      | -         | -     | -0.28 | -1.67      | -8.29             | 72.68  | 1.7200      | 1.9500       | -               | 5,098        | 1.9890         | 12.37  | BUY             |
|                           | AvtoVAZ, pref.                     | - AVAZP    | 0.5775      | -         | -     | -1.28 | -3.75      | -24.51            | 15.50  | -           | -            | -               | -            | 1.4910         | 158.18 | BUY             |
|                           | GAZ                                | - GAZA     | 188.75      | -         | -     | -3.21 | -9.25      | 11.03             | 44.41  | 155.000     | 210.000      | -               | 3,663        | 192.77         | 2.13   | BUY             |
|                           | GAZ, pref.                         | - GAZAP    | 115.00      | -         | -     | -     | -5.35      | -4.17             | 19.17  | 113.000     | 125.500      | -               | -            | 144.58         | 25.72  | BUY             |
|                           | ZMZ                                | - ZMZN     | 4.9250      | -         | -     | 7.65  | 20.86      | 64.17             | 123.86 | 2.9000      | 4.9000       | -               | 682          | 4.4500         | -9.64  | HOLD            |
|                           | ZMZ, pref                          | - zmznp    | 3.3750      | -         | -     | 1.50  | 0.90       | 40.62             | 84.93  | 2.6000      | 3.2500       | -               | -            | 3.3400         | -1.04  | HOLD            |
|                           | Kamaz                              | - KMAZ     | 5.9000      | -         | -     | -1.67 | -3.67      | 13.46             | 90.32  | 5.6500      | 7.2500       | -               | 4,173        | 6.4000         | 8.47   | BUY             |
|                           | Kirovsky zavod                     | - KIRZ     | 50.200      | -         | -     | -0.10 | -1.57      | -8.73             | 85.93  | 48.000      | 52.000       | 22,088          | 545          | 33.290         | -33.69 | REDUCE          |
|                           | NefAZ                              | - nfaz     | 45.250      | -         | -     | 0.56  | -6.22      | 25.69             | 193.83 | 36.500      | 50.250       | -               | 364          | 49.150         | 8.62   | BUY             |
|                           | Saturn NPO                         | - satr     | 0.0880      | -         | -     | 6.02  | -0.28      | -26.05            | -17.76 | 0.0835      | 0.1125       | -               | 351          | 0.1379         | 56.70  | HOLD            |
|                           | OMZ                                | - OMZZ     | 6.8500      | -         | -     | -     | -4.20      | -12.46            | -22.38 | 7.0000      | 7.6000       | -               | 243          | 6.3200         | -7.74  | SELL            |
|                           | RSC Energia                        | - satr     | 700.00      | -         | -     | 0.36  | 7.69       | 41.41             | 110.53 | 489.90      | 700.00       | -               | 787          | 561.20         | -19.83 | HOLD            |
|                           | UAZ                                | - uaza     | 0.1300      | -         | -     | -     | -2.80      | -6.47             | 30.00  | 0.1125      | 0.1390       | -               | 519          | -              | -      | -               |
|                           | UAZ, pref.                         | - uazap    | 0.0825      | -         | -     | 8.20  | 8.91       | -7.30             | 40.43  | 0.0710      | 0.0890       | -               | -            | -              | -      | -               |
|                           | Severstal-Auto                     | - SVAV     | 61.150      | -         | -     | 1.07  | -4.45      | 13.24             | 95.68  | 49.000      | 67.300       | 1,490,295       | 2,096        | 81.330         | 33.00  | BUY             |
|                           | Power Machines                     | - SILM     | 0.2138      | -         | -     | -0.12 | -2.95      | 5.56              | 22.00  | 0.1930      | 0.2220       | -               | 1,862        | 0.1250         | -41.52 | SELL            |
| <b>Industry</b>           |                                    |            |             |           |       |       |            |                   |        |             |              |                 |              |                |        |                 |
|                           | ALNAS                              | - alnz     | 0.9005      | -         | -     | -     | -1.32      | -21.70            | -9.95  | 0.8250      | 0.8500       | -               | 186          | 1.3300         | 47.70  | BUY             |
|                           | Angeromash                         | - ange     | 60.500      | -         | -     | -     | 61.33      | 5.22              | 70.42  | -           | -            | -               | 60           | 79.650         | 31.65  | BUY             |
|                           | BEPP                               | - bunz     | 52.000      | -         | -     | -     | 9.47       | 9.47              | -5.45  | -           | -            | -               | 16           | 113.840        | 118.92 | BUY             |
|                           | BEPP, pref.                        | - bunzp    | 41.000      | -         | -     | -     | 32.26      | -1.20             | 20.59  | -           | -            | -               | -            | 85.380         | 108.24 | BUY             |
|                           | Mikron                             | - mkro     | 11.7500     | -         | -     | -     | 1.29       | 16.63             | 55.12  | 10.0000     | 11.3000      | -               | 115          | -              | -      | -               |
|                           | Sitronics                          | - SITR     | 0.1215      | -         | -     | -     | -6.36      | 1.25              | -34.68 | 0.1150      | 0.1366       | -               | 1,160        | 0.0854         | -29.71 | SELL            |
| <b>Chemical industry</b>  |                                    |            |             |           |       |       |            |                   |        |             |              |                 |              |                |        |                 |
|                           | Kirovo-Chepetsk Chem. Comp.        | - kchk     | 370.00      | -         | -     | -     | -3.39      | -9.20             | 51.02  | 360.000     | 402.000      | -               | 418          | -              | -      | -               |
|                           | Kirovo-Chepetsk Chem. Comp., pref. | - kchkp    | 116.50      | -         | -     | -0.43 | -0.43      | -36.16            | -25.08 | -           | -            | -               | -            | -              | -      | -               |
|                           | Silvinit                           | - SILV     | 1,635.00    | -         | -     | 0.37  | 23.86      | 85.80             | 518.15 | 900.000     | 1,630.000    | -               | 15,182       | -              | -      | UNDER REVISION  |
|                           | Silvinit, pref                     | - silvp    | 915.00      | -         | -     | 1.27  | 25.34      | 40.77             | 388.00 | 570.000     | 915.000      | 43,005          | -            | -              | -      | UNDER REVISION  |
|                           | Uralkali                           | ▼ URKA     | 11.7000     | -0.2000   | -1.68 | -1.68 | 4.46       | 50.00             | 493.91 | 5.8000      | 12.4000      | 140,057         | 24,855       | -              | -      | UNDER REVISION  |
| <b>Retail Trade</b>       |                                    |            |             |           |       |       |            |                   |        |             |              |                 |              |                |        |                 |
|                           | Pharmacy Network 36.6              | - APTK     | 45.000      | -         | -     | -5.81 | 4.05       | -38.36            | -49.52 | 42.500      | 70.000       | 90,000          | 428          | -              | -      | UNDER REVISION  |
|                           | GUM                                | - GUMM     | 2.6850      | -         | -     | 0.37  | -3.07      | 30.98             | 13.05  | 1.9700      | 2.9500       | -               | 161          | -              | -      | UNDER REVISION  |
|                           | X5 Retail Group**                  | ▼ FIVE     | 38.000      | -0.100    | -0.26 | -1.94 | 7.77       | 4.11              | 42.07  | 26.960      | 38.930       | 3,783,979       | 8,045        | -              | -      | UNDER REVISION  |
|                           | Seventh Continent                  | - SCOM     | 25.200      | -         | -     | 3.70  | 2.86       | -2.70             | -10.00 | 22.750      | 27.300       | 12,600          | 1,890        | -              | -      | UNDER REVISION  |
|                           | TzUM                               | - TZUM     | 6.1500      | -         | -     | -0.81 | 2.50       | 186.05            | 192.16 | 2.1200      | 6.1000       | -               | 551          | -              | -      | UNDER REVISION  |

Source: RTS website, Bloomberg (\* - NASDAQ, \*\* - LME, rest - RTS) Estimation: Veles Capital

## Trade results

|                           | Ticker                           | Price, USD | Change, USD | Change, % |         |       |            | Current year, USD |        | Volume, USD | MCAP, mn USD | Fair price, USD | Potential, % | Recommendation |          |        |                |
|---------------------------|----------------------------------|------------|-------------|-----------|---------|-------|------------|-------------------|--------|-------------|--------------|-----------------|--------------|----------------|----------|--------|----------------|
|                           |                                  |            |             | day       | week    | month | from Jan 1 | year              | min    |             |              |                 |              |                | max      |        |                |
| <b>Consumer Sector</b>    |                                  |            |             |           |         |       |            |                   |        |             |              |                 |              |                |          |        |                |
|                           | Baltika                          | -          | PKBA        | 43.055    | -       | -     | -0.79      | -0.45             | -11.00 | -12.13      | 42.800       | 50.000          | -            | 6.860          | -        | -      | UNDER REVISION |
|                           | Baltika, pref.                   | -          | PKBAP       | 26.625    | -       | -     | -          | -4.91             | -20.52 | -18.08      | 28.000       | 31.000          | -            | -              | -        | -      | UNDER REVISION |
|                           | WBD                              | ▲          | WBDF        | 83.250    | 0.750   | 0.91  | 6.05       | 2.78              | -7.50  | 34.27       | 72.000       | 93.000          | 83.250       | 3.663          | -        | -      | UNDER REVISION |
|                           | Kalina                           | -          | KLNA        | 33.000    | -       | -     | -1.49      | 3.12              | -18.52 | -4.35       | 30.500       | 39.000          | -            | 322            | -        | -      | UNDER REVISION |
|                           | Lebedyansky                      | -          | LEKZ        | 82.000    | -       | -     | 1.23       | 1.08              | -10.87 | 0.31        | 80.000       | 93.500          | -            | 1.674          | -        | -      | UNDER REVISION |
| <b>Transport</b>          |                                  |            |             |           |         |       |            |                   |        |             |              |                 |              |                |          |        |                |
|                           | Aeroflot                         | -          | AFLT        | 4.0900    | -       | -     | -6.73      | -4.66             | 9.07   | 55.51       | 3.5000       | 4.4500          | -            | 4.542          | 4.7100   | 15.16  | BUY            |
|                           | Primorsk Shipping Corporation    | -          | PRIM        | 0.4325    | -       | -     | -          | 2.37              | 5.49   | 43.45       | 0.4200       | 0.4200          | -            | 344            | 0.5610   | 29.71  | BUY            |
|                           | FESCO                            | -          | FESH        | 1.3500    | -       | -     | 2.27       | 17.39             | 23.29  | 95.65       | 0.9800       | 1.3500          | 29.965       | 3.187          | 1.0500   | -22.22 | SELL           |
|                           | Novorossiysk Sea Shipping        | -          | NOMP        | 3.2400    | -       | -     | 3.85       | 1.25              | 10.58  | 44.64       | 2.9900       | 3.2500          | -            | 1.407          | 3.6000   | 11.11  | BUY            |
|                           | Novorossiysk Sea Shipping, pref. | -          | NOMPP       | 1.5100    | -       | -     | -4.73      | -3.82             | -16.11 | 15.27       | 1.5700       | 1.7400          | -            | -              | 2.7000   | 78.81  | BUY            |
| <b>Banks</b>              |                                  |            |             |           |         |       |            |                   |        |             |              |                 |              |                |          |        |                |
|                           | VTB                              | -          | VTBR        | 0.0041    | -       | -     | -3.76      | 7.05              | -18.97 | -           | 0.0034       | 0.0050          | 41,000       | 27,569         | -        | -      | -              |
|                           | Sberbank                         | ▼          | SBER        | 3.5900    | -0.0500 | -1.37 | -4.01      | 13.07             | -14.93 | -0.28       | 3.0350       | 4.3800          | 3,070,500    | 79,897         | 4.6210   | 28.72  | ACCUMULATE     |
|                           | Sberbank, pref.                  | -          | SBERP       | 2.4000    | -       | -     | -1.03      | 25.33             | -20.00 | -11.93      | 2.0100       | 2.9300          | -            | -              | 3.4660   | 44.42  | ACCUMULATE     |
| <b>Media &amp; IT</b>     |                                  |            |             |           |         |       |            |                   |        |             |              |                 |              |                |          |        |                |
|                           | RBC                              | -          | RBCI        | 8.9750    | -       | -     | 4.97       | 4.97              | -14.11 | 7.41        | 8.3500       | 10.9000         | -            | 1,256          | 9.8600   | 9.86   | BUY            |
|                           | CTC Media*                       | -          | CTCM        | 27.450    | -       | -     | -2.49      | 7.14              | -9.11  | -           | 24.500       | 31.750          | 7,083,870    | 4,176          | 32.900   | 19.85  | BUY            |
| <b>Oblgaz</b>             |                                  |            |             |           |         |       |            |                   |        |             |              |                 |              |                |          |        |                |
|                           | Altairkraigasservice             | -          | akgs        | 180.00    | -       | -     | 1.41       | 1.41              | 56.52  | -           | 105.00       | 105.00          | -            | 20             | 339.43   | 88.57  | BUY            |
|                           | Astrakhanoblgas                  | -          | asog        | 2.0000    | -       | -     | -          | -                 | -25.93 | -           | 2.7000       | 2.7000          | -            | 8              | 2.3800   | 19.00  | HOLD           |
|                           | Belgorodoblglas                  | -          | bogz        | 425.00    | -       | -     | -64.95     | -64.73            | -15.00 | -           | 700.00       | 700.00          | -            | 34             | 3,331.71 | 683.93 | BUY            |
|                           | Bryanskoblglas                   | -          | brog        | 575.00    | -       | -     | -          | -8.00             | 41.10  | 94.92       | 380.00       | 510.00          | -            | 63             | 1,140.89 | 98.42  | BUY            |
|                           | Vladimiroblglas                  | -          | vlog        | 925.00    | -       | -     | -          | -21.28            | -37.39 | 94.74       | 1,050.00     | 1,355.00        | -            | 42             | 973.7    | 5.27   | HOLD           |
|                           | Volgogradoblglas                 | -          | vlgz        | 825.00    | -       | -     | -          | 6.45              | 27.41  | 129.17      | 495.00       | 805.00          | -            | 71             | 1,329.23 | 61.12  | BUY            |
|                           | Voronezhoblglas                  | -          | vozg        | 5.1000    | -       | -     | -10.92     | -27.14            | 29.28  | 146.97      | 3.6000       | 7.0000          | 5,100        | 113            | 12.8200  | 151.37 | BUY            |
|                           | Ivanovooblglas                   | -          | ivog        | 50.000    | -       | -     | -          | -                 | 809.09 | 900.00      | -            | -               | -            | 18             | 150.760  | 201.52 | BUY            |
|                           | Ivanovooblglas, pref.            | -          | ivogp       | 26.000    | -       | -     | -49.02     | -49.02            | -46.39 | 766.67      | -            | -               | -            | -              | 150.760  | 479.85 | BUY            |
|                           | Irkutskoblglas                   | -          | irog        | 195.00    | -       | -     | -          | -                 | -      | 95.00       | -            | -               | -            | 4              | -        | -      | -              |
|                           | Kalugaoblglas                    | -          | klog        | 860.00    | -       | -     | -          | 3.61              | 43.33  | 330.00      | -            | -               | -            | 26             | 1,286.95 | 49.65  | BUY            |
|                           | Karelgas                         | -          | klgz        | 128.50    | -       | -     | -          | 0.39              | 0.78   | -14.33      | -            | -               | -            | 3              | 324.27   | 152.35 | BUY            |
|                           | Kirovoblglas                     | -          | krog        | 335.00    | -       | -     | 1.52       | 1.52              | 54.02  | 188.79      | -            | -               | -            | 33             | 705.25   | 110.52 | BUY            |
|                           | Komigaz                          | -          | kgaz        | 32.500    | -       | -     | -          | -                 | -13.33 | -7.80       | 30.000       | 30.000          | -            | 11             | 80.440   | 147.51 | BUY            |
|                           | Komigaz, pref.                   | -          | kgazp       | 15.300    | -       | -     | -          | -15.00            | -30.45 | -25.37      | -            | -               | -            | -              | 60.330   | 294.31 | BUY            |
|                           | Kostromaoblglas                  | ▼          | koog        | 331.00    | -4.00   | -1.19 | -12.32     | -15.13            | -12.89 | 40.85       | 331.00       | 400.00          | 43,361       | 18             | 935.74   | 182.70 | BUY            |
|                           | Krasnodarkraigas                 | -          | kgas        | 15.000    | -       | -     | -          | -                 | 141.94 | 200.00      | -            | -               | -            | 31             | 12.110   | -19.27 | SELL           |
|                           | Kurganoblglas                    | -          | kuog        | 400.00    | -       | -     | -          | -                 | -38.46 | 33.33       | -            | -               | -            | 12             | -        | -      | -              |
|                           | Kurskoblglas                     | -          | krz         | 850.00    | -       | -     | -2.86      | -9.09             | 161.54 | 750.00      | 700.00       | 700.00          | -            | 75             | 1,184.98 | 39.41  | BUY            |
|                           | Lenoblglas                       | -          | leog        | 2,575.00  | -       | -     | -          | -                 | -0.96  | 267.86      | -            | -               | -            | 204            | 717.7    | -72.13 | HOLD           |
|                           | Lipetskoblglas                   | -          | lpog        | 170.00    | -       | -     | 13.33      | 13.33             | 36.00  | -           | -            | -               | -            | 20             | 716.78   | 321.64 | BUY            |
|                           | Nizhegorodoblglas                | -          | nnog        | 2.4000    | -       | -     | 0.84       | 9.09              | -39.85 | -16.67      | 2.3500       | 4.5000          | -            | 67             | 1.8700   | -22.08 | HOLD           |
|                           | Omskoblglas                      | -          | omog        | 11.500    | -       | -     | -          | -                 | 76.92  | -           | 10.000       | 11.000          | -            | 17             | 20.130   | 75.04  | BUY            |
|                           | Omskoblglas, pref.               | -          | omogp       | 6.0000    | -       | -     | -          | -                 | 20.00  | 50.00       | -            | -               | -            | -              | 11.5500  | 92.50  | BUY            |
|                           | Oreloblglas                      | -          | orgz        | 565.00    | -       | -     | -          | 334.62            | 50.67  | 42.14       | -            | -               | -            | 21             | 512.18   | -9.35  | BUY            |
|                           | Orenburgoblglas                  | -          | orog        | 2,125.00  | -       | -     | -          | 3.66              | 120.21 | 249.79      | 1,000.00     | 2,250.00        | -            | 163            | 2,855.8  | 34.39  | HOLD           |
|                           | Pensagasifikatsiya               | -          | pgzf        | 140.00    | -       | -     | 7.69       | 7.69              | -30.00 | 180.00      | -            | -               | -            | 5              | 869.49   | 521.06 | BUY            |
|                           | Rostovoblglas                    | -          | rtbg        | 750.00    | -       | -     | -7.69      | -16.67            | 25.00  | 70.45       | 625.00       | 900.00          | -            | 100            | 1,529.82 | 103.98 | BUY            |
|                           | Rostovoblglas, pref.             | -          | rtbgp       | 455.00    | -       | -     | -5.21      | -5.21             | -3.19  | 33.82       | 460.00       | 460.00          | -            | -              | 1,529.82 | 236.22 | BUY            |
|                           | Ryazanoblglas                    | -          | rzog        | 4.5000    | -       | -     | 5.88       | -43.75            | -56.52 | 125.00      | -            | -               | -            | 22             | 5.9200   | 31.56  | HOLD           |
|                           | Samaragas                        | -          | sagz        | 250.000   | -       | -     | 0.91       | 449.45            | 352.49 | 376.19      | 45.500       | 45.500          | -            | 29             | 289.840  | 15.94  | BUY            |
|                           | Saratovoblglas                   | -          | srog        | 20.000    | -       | -     | -14.89     | -13.04            | 146.15 | 230.58      | 7.750        | 25.000          | 100,000      | 74             | 50.010   | 150.05 | BUY            |
|                           | Sibirgasservice                  | -          | sbsg        | 7.5500    | -       | -     | -11.70     | -11.70            | -      | -28.10      | -            | -               | -            | 35             | -        | -      | -              |
|                           | Smolenskoblglas                  | -          | smog        | 153.00    | -       | -     | -1.29      | -4.38             | 73.86  | 206.00      | 81.50        | 185.00          | -            | 61             | 332.44   | 117.28 | BUY            |
|                           | Stavropolkraigas                 | -          | stkg        | 500.00    | -       | -     | -          | 5.26              | -47.64 | -           | 575.00       | 575.00          | -            | 62             | 81.59    | -83.68 | SELL           |
|                           | Stavropolkraigas, pref.          | -          | stkgp       | 325.00    | -       | -     | -          | 14.04             | -45.83 | -           | 280.00       | 400.00          | -            | -              | 81.59    | -74.90 | SELL           |
|                           | Tambovoblglas                    | -          | tozg        | 47.500    | -       | -     | 13.10      | 18.75             | 35.71  | 163.89      | 29.000       | 40.000          | -            | 41             | 81.290   | 71.14  | BUY            |
|                           | Tveroblglas                      | -          | tveo        | 250.00    | -       | -     | -          | -                 | -8.42  | 56.25       | 225.00       | 246.00          | -            | 45             | 236.31   | -5.48  | HOLD           |
|                           | Tulaoblglas                      | -          | tuog        | 500.00    | -       | -     | -6.54      | -23.08            | 85.19  | 300.00      | 180.00       | 705.00          | -            | 79             | 1,106.23 | 121.25 | BUY            |
|                           | Chitaoblglas                     | -          | chog        | 55.000    | -       | -     | -          | -                 | -      | -           | -            | -               | -            | 4              | -        | -      | -              |
|                           | Yaroslavloblglas                 | -          | yrogl       | 300.00    | -       | -     | -          | 5.26              | 15.38  | 109.79      | -            | -               | -            | 21             | 503.81   | 67.94  | BUY            |
| <b>Services companies</b> |                                  |            |             |           |         |       |            |                   |        |             |              |                 |              |                |          |        |                |
|                           | Giprospetsgaz                    | -          | gsgz        | 1,455.00  | -       | -     | -          | 0.34              | -38.09 | 11.92       | 1,800.00     | 1,850.00        | -            | 61             | 7,463.00 | 412.92 | BUY            |
|                           | Giprospetsgaz, pref.             | -          | gsgzp       | 780.05    | -       | -     | -0.63      | -10.85            | -41.13 | -22.00      | 800.00       | 800.00          | -            | -              | 5,970.00 | 665.34 | BUY            |
|                           | Spetsgazremstroy                 | -          | sgrs        | 260.00    | -       | -     | -          | -3.70             | -27.78 | -           | 344.00       | 425.00          | -            | 133            | 741.25   | 185.10 | BUY            |
|                           | Spetsgazremstroy, pref.          | -          | sgrsp       | 120.00    | -       | -     | -          | -29.41            | -36.00 | -           | 120.00       | 255.00          | -            | -              | 555.94   | 363.28 | BUY            |
| <b>Services companies</b> |                                  |            |             |           |         |       |            |                   |        |             |              |                 |              |                |          |        |                |
|                           | Strojpolimerkeramika             | -          | spke        | 40.000    | -       | -     | -          | 150.00            | 158.06 | -           | -            | -               | -            | 75             | 79.940   | 99.85  | BUY            |
|                           | Strojpolimerkeramika, pref.      | -          | spkep       | 8.0000    | -       | -     | -          | 36.75             | -29.52 | -           | 8.0000       | 8.0000          | -            | -              | 27.9800  | 249.75 | BUY            |

Source: RTS website, Bloomberg (\* - NASDAQ, \*\* - LME, rest - RTS) Estimation: Veles Capital

## Quotes of Russian ADR vs. shares in RTS

|                      | ADR Code | RTS Code | Shares in ADR | Stock Market | Last ADR price, USD | Change, USD | Share's price in ADR, USD | Last RTS price, USD | ADR / RTS, % | ADR Change, % | RTS Change, % | ADR trade volume, ths. USD | RTS trade volume, ths. USD |
|----------------------|----------|----------|---------------|--------------|---------------------|-------------|---------------------------|---------------------|--------------|---------------|---------------|----------------------------|----------------------------|
| AFK Sistema          | SSA LI   | AFKS     | 20,00         | London       | 28.500              | -           | 1.4                       | 1.4                 | -            | -             | -0.00         | -                          | 71                         |
| AFK Sistema          | KO71 GR  | AFKS     | 20,00         | Frankfurt    | 34.687              | 0.484       | 1.7                       | 1.4                 | -            | 1.42          | -0.00         | -                          | 71                         |
| Aeroflot             | AETG GR  | AFLT     | 100           | Frankfurt    | 408.365             | -4.096      | 4.084                     | 4.120               | -            | -0.99         | -             | 4                          | -                          |
| Wimm-Bill-Dann       | WBD LI   | WBDF     | 1             | London       | 110.000             | -           | 110.000                   | 83.250              | -            | -             | 0.01          | -                          | 83                         |
| Wimm-Bill-Dann       | WBD US   | WBDF     | 1             | New York     | 134.550             | -           | 134.550                   | 83.250              | -            | -             | 0.01          | -                          | 83                         |
| Wimm-Bill-Dann       | WBPA GR  | WBDF     | 1             | Frankfurt    | 133.263             | -5.888      | 133.263                   | 83.250              | 0.60         | -4.23         | 0.01          | 5                          | 83                         |
| Volgaelcom           | NZH GR   | NNSI     | 2             | Frankfurt    | 8.987               | -0.408      | 4.494                     | 4.550               | -            | -4.35         | -             | -                          | -                          |
| Vimpelcom            | VIP US   | VIMP     | 1/4           | New York     | 34.870              | -           | 697.40                    | 420.00              | -            | -             | -             | -                          | -                          |
| Vimpelcom            | VIP GR   | VIMP     | 1/4           | Frankfurt    | 35.476              | 0.578       | 709.52                    | 420.00              | -            | 1.66          | -             | 88                         | -                          |
| Gazprom              | OGZD LI  | GAZP     | 4             | London       | 61.500              | -           | 15.375                    | 15.360              | -            | -             | -0.00         | -                          | 22,565                     |
| Gazprom              | OGZPY US | GAZP     | 4             | New York     | 61.630              | -           | 15.408                    | 15.360              | -            | -             | -0.00         | -                          | 22,565                     |
| Gazprom              | GAZ GR   | GAZP     | 4             | Frankfurt    | 61.302              | -0.204      | 15.326                    | 15.360              | -0.00        | -0.33         | -0.00         | 2,006                      | 22,565                     |
| Golden Telecom       | GLDN US  | GLDN     | 1             | New York     | 105.020             | -           | 105.020                   | -                   | -            | -             | -             | -                          | -                          |
| Golden Telecom       | GT7 GR   | GLDN     | 1             | Frankfurt    | 103.873             | -           | 103.873                   | -                   | -            | -             | -             | -                          | -                          |
| EvrazHolding         | EVR LI   | -        | 1/3           | London       | 107.250             | -           | 321.750                   | -                   | -            | -             | -             | -                          | -                          |
| EvrazHolding         | HK1A GR  | -        | 1/3           | Frankfurt    | 108.240             | 1.256       | 324.721                   | -                   | -            | 1.17          | -             | 20                         | -                          |
| Irkutskenergo        | IKSGY US | IRGZ     | 50            | New York     | -                   | -           | -                         | 0.900               | -            | -             | -             | -                          | -                          |
| Irkutskenergo        | IRK GR   | IRGZ     | 50            | Frankfurt    | -                   | -           | -                         | 0.900               | -            | -             | -             | -                          | -                          |
| Kuzbasenergo         | KUW GR   | KZBE     | 10            | Frankfurt    | 22.382              | -           | 2.238                     | 2.500               | -            | -             | -             | -                          | -                          |
| Lenenergo            | LNO GR   | LSNG     | 80            | Frankfurt    | 35.460              | -           | 0.443                     | 1.840               | -            | -             | -             | -                          | -                          |
| LUKOIL               | LKOD LI  | LKOH     | 1             | London       | 106.500             | -           | 106.500                   | 109.100             | -            | -             | 0.02          | -                          | 13,811                     |
| LUKOIL               | LUKOY US | LKOH     | 1             | New York     | 106.450             | -           | 106.450                   | 109.100             | -            | -             | 0.02          | -                          | 13,811                     |
| LUKOIL               | LUK GR   | LKOH     | 1             | Frankfurt    | 108.477             | 2.125       | 108.477                   | 109.100             | -0.01        | 2.00          | 0.02          | 1,279                      | 13,811                     |
| MCTN                 | MOW GR   | MGTS     | 1             | Frankfurt    | 32.322              | -0.049      | 32.322                    | 31.500              | -            | -0.15         | -             | -                          | -                          |
| Mechel               | MTL US   | MTLR     | 3             | New York     | 44.470              | -           | 14.823                    | 44.500              | -            | -             | -             | -                          | -                          |
| Mechel               | FQF GR   | MTLR     | 3             | Frankfurt    | 44.492              | -           | 14.831                    | 44.500              | -            | -             | -             | -                          | -                          |
| Mosenergo            | AOMD LI  | MSNG     | 100           | London       | 22.000              | -           | 0.220                     | 0.220               | -            | -             | -             | -                          | -                          |
| Mosenergo            | AOMOY US | MSNG     | 100           | New York     | 20.500              | -           | 0.205                     | 0.220               | -            | -             | -             | -                          | -                          |
| Mosenergo            | MRO GR   | MSNG     | 100           | Frankfurt    | 18.652              | -0.028      | 0.187                     | 0.220               | -            | -0.15         | -             | 7                          | -                          |
| MTS                  | MBDL LI  | MTSS     | 5             | London       | -                   | -           | -                         | 12.840              | -            | -             | -0.01         | -                          | 263                        |
| MTS                  | MBT US   | MTSS     | 5             | New York     | -                   | -           | -                         | 12.840              | -            | -             | -0.01         | -                          | 263                        |
| MTS                  | MKY GR   | MTSS     | 5             | Frankfurt    | 86.971              | -0.132      | 17.394                    | 12.840              | -            | -0.15         | -0.01         | -                          | 263                        |
| Nizhnekamskneftekhim | QAO GR   | NKNC     | 10            | Frankfurt    | 9.460               | -0.030      | 0.946                     | 0.960               | -            | -0.32         | -             | 4                          | -                          |
| NOVATEK              | NVTK LI  | NVTK     | 1/100         | London       | -                   | -           | -                         | 8.180               | -            | -             | -             | -                          | -                          |
| NOVATEK              | NVATY US | NVTK     | 1/100         | Frankfurt    | -                   | -           | -                         | 8.180               | -            | -             | -             | -                          | -                          |
| Norilsk Nickel       | MNOD LI  | GMKN     | 1             | London       | 29.460              | -           | 29.46                     | 293.00              | -            | -             | -0.02         | -                          | 1,109                      |
| Norilsk Nickel       | NILSY US | GMKN     | 1             | New York     | 29.700              | -           | 29.70                     | 293.00              | -            | -             | -0.02         | -                          | 1,109                      |
| Norilsk Nickel       | NNIA GR  | GMKN     | 1             | Frankfurt    | 29.405              | -0.045      | 29.41                     | 293.00              | -0.90        | -0.15         | -0.02         | 156                        | 1,109                      |
| UHM                  | UHM GR   | OMZZ     | 1             | Frankfurt    | 6.622               | -0.010      | 6.622                     | 8.750               | -            | -0.15         | -             | -                          | -                          |
| Pyaterochka          | FIVE LI  | -        | 1/4           | London       | 38.000              | -           | 152.000                   | -                   | -            | -             | -             | -                          | -                          |
| UES                  | UESD LI  | EESR     | 100           | London       | 104.000             | -           | 1.040                     | 1.065               | -            | -             | 0.01          | -                          | 14,863                     |
| UES                  | USERY US | EESR     | 100           | New York     | -                   | -           | -                         | 1.065               | -            | -             | 0.01          | -                          | 14,863                     |
| UES                  | UES GR   | EESR     | 100           | Frankfurt    | 105.324             | -2.292      | 1.053                     | 1.065               | -0.01        | -2.13         | 0.01          | 95                         | 14,863                     |
| Rostelekom           | RKMD LI  | RTKM     | 6             | London       | 69.300              | -           | 11.550                    | 11.390              | -            | -             | -             | -                          | 108                        |
| Rostelekom           | ROS US   | RTKM     | 6             | New York     | -                   | -           | -                         | 11.390              | -            | -             | -             | -                          | 108                        |
| Rostelekom           | RTL GR   | RTKM     | 6             | Frankfurt    | 67.798              | -0.514      | 11.300                    | 11.390              | -0.01        | -0.75         | -             | 136                        | 108                        |
| Seversky pipe plant  | SVY GR   | SVTZ     | 10            | Frankfurt    | 130.866             | -0.199      | 13.087                    | 14.500              | -            | -0.15         | -             | -                          | -                          |
| Gazprom Neft         | GAZ LI   | SIBN     | 5             | London       | 18.790              | -           | 3.758                     | 4.300               | -            | -             | -             | -                          | -                          |
| Gazprom Neft         | GZPFY US | SIBN     | 5             | New York     | 32.250              | -           | 6.450                     | 4.300               | -            | -             | -             | -                          | -                          |
| Gazprom Neft         | SCF GR   | SIBN     | 5             | Frankfurt    | 36.185              | 0.577       | 7.237                     | 4.300               | -            | 1.62          | -             | 94                         | -                          |
| Surgutneftegas       | SGGD LI  | SNGS     | 50            | London       | 12.330              | -           | 0.247                     | 1.224               | -            | -             | -0.01         | -                          | 135                        |
| Surgutneftegas       | SGTZY US | SNGS     | 50            | New York     | -                   | -           | -                         | 1.224               | -            | -             | -0.01         | -                          | 135                        |
| Surgutneftegas       | SGN GR   | SNGS     | 50            | Frankfurt    | 61.927              | -           | 1.239                     | 1.224               | -            | -             | -0.01         | -                          | 135                        |
| Tatneft              | ATAD LI  | TATN     | 20            | London       | 101.000             | -           | 5.050                     | 7.850               | -            | -             | -0.01         | -                          | 156                        |
| Tatneft              | TNT US   | TATN     | 20            | New York     | -                   | -           | -                         | 7.850               | -            | -             | -0.01         | -                          | 156                        |
| Tatneft              | TTFA GR  | TATN     | 20            | Frankfurt    | 96.244              | -0.314      | 4.812                     | 7.850               | -0.39        | -0.32         | -0.01         | 324                        | 156                        |
| Tyumenaviatrans      | UTARY US | TMAT     | 100           | New York     | 40.000              | -           | 0.400                     | 0.538               | -            | -             | -             | -                          | -                          |
| Tyumenaviatrans      | TYV GR   | TMAT     | 100           | Frankfurt    | 67.010              | -0.102      | 0.670                     | 0.538               | -            | -0.15         | -             | -                          | -                          |
| Tsum                 | THT GR   | TZUM     | 20            | Frankfurt    | 119.829             | -1.762      | 5.991                     | 2.000               | -            | -1.45         | -             | -                          | -                          |
| YUKOS                | YUK LI   | YUKO     | 4             | London       | 3.950               | -           | 0.988                     | 0.350               | -            | -             | -             | -                          | -                          |
| YUKOS                | YUKOY US | YUKO     | 4             | New York     | -                   | -           | -                         | 0.350               | -            | -             | -             | -                          | -                          |
| STC                  | KUE GR   | KUBN     | 50            | Frankfurt    | 8.229               | -           | 0.165                     | 0.152               | -            | -             | -             | -                          | -                          |

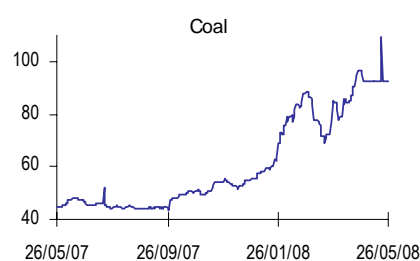
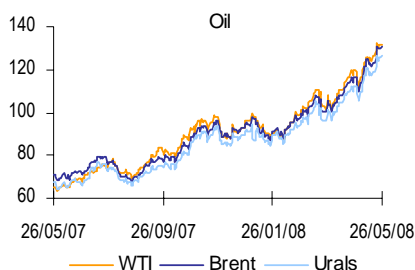
Source: Bloomberg, Estimation: Veles Capital

## Commodity markets

### Prices of energy carriers

|                  |   | Close, USD | Change, USD | Change, % |        |       |            |        | Current year, USD |        |
|------------------|---|------------|-------------|-----------|--------|-------|------------|--------|-------------------|--------|
|                  |   |            |             | day       | week   | month | from Jan 1 | year   | min               | max    |
| Light, USD / bbl | ▲ | 132.18     | 0.59        | 0.45      | 6.73   | 13.42 | 37.83      | 88.72  | 86.75             | 133.14 |
| Brent, USD / bbl | ▲ | 130.63     | 0.48        | 0.37      | 6.10   | 12.34 | 39.13      | 83.44  | 85.05             | 134.63 |
| Urals, USD / bbl | ▲ | 126.48     | 0.59        | 0.47      | 6.34   | 13.08 | 38.56      | 87.68  | 82.80             | 127.51 |
| WTI, USD / bbl   | - | 131.59     | -           | -         | 3.57   | 9.93  | 37.07      | 103.23 | 86.47             | 132.57 |
| Brent-Urals      | ▼ | 4.15       | -0.11       | -2.58     | -0.72  | -6.32 | 59.00      | 8.64   | 1.66              | 9.94   |
| Coal, USD / ton  | - | 92.75      | -           | -         | -15.10 | -3.89 | 67.12      | 106.11 | 55.50             | 109.25 |

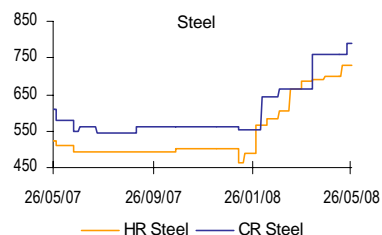
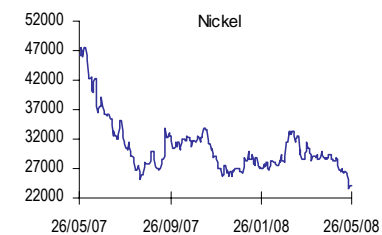
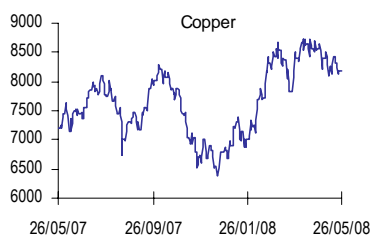
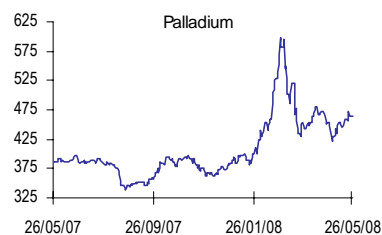
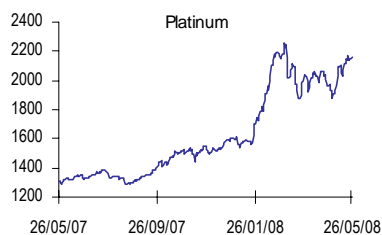
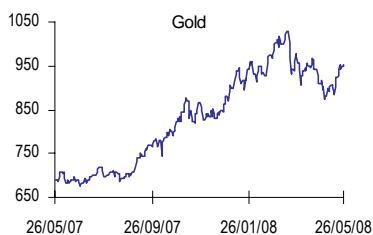
Source: Bloomberg, Estimation: Veles Capital



### Prices of metals

|                        |   | Close, USD | Change, USD | Change, % |       |        |            |        | Current year, USD |           |
|------------------------|---|------------|-------------|-----------|-------|--------|------------|--------|-------------------|-----------|
|                        |   |            |             | day       | week  | month  | from Jan 1 | year   | min               | max       |
| Gold, USD / ounce      | ▲ | 951.21     | 3.91        | 0.41      | 2.70  | 4.45   | 9.16       | 37.77  | 871.38            | 1,027.52  |
| Silver, USD / ounce    | ▲ | 18.78      | 0.12        | 0.66      | 7.89  | 8.10   | 21.41      | 37.59  | 15.47             | 21.42     |
| Platinum, USD / ounce  | ▲ | 2,164.14   | 19.30       | 0.90      | 0.94  | 10.09  | 36.04      | 65.76  | 1,540.21          | 2,257.73  |
| Palladium, USD / ounce | ▲ | 465.00     | 1.03        | 0.22      | 1.41  | 2.59   | 19.66      | 20.07  | 380.95            | 598.39    |
| Aluminum, USD / ton    | - | 3,001.00   | -           | -         | 0.20  | 0.20   | 24.57      | 7.49   | 2,409.00          | 3,227.00  |
| Copper, USD / ton      | - | 8,180.00   | -           | -         | -1.62 | -4.61  | 22.55      | 13.61  | 6,675.00          | 8,730.00  |
| Nickel, USD / ton      | - | 24,100.00  | -           | -         | -7.66 | -18.31 | -8.37      | -47.95 | 23,500.00         | 33,400.00 |
| Lead, USD / ton        | - | 2,009.00   | -           | -         | -9.95 | -27.45 | -21.22     | -9.50  | 2,009.00          | 3,420.00  |
| Tin, USD / ton         | - | 23,750.00  | -           | -         | -1.04 | -0.52  | 44.60      | 70.86  | 16,025.00         | 25,300.00 |
| Zink, USD / ton        | - | 2,150.00   | -           | -         | -6.03 | -7.33  | -9.28      | -40.93 | 2,110.00          | 2,830.00  |
| Titanium, USD / ton    | - | 5,401.33   | -           | -         | -     | 2.08   | 20.69      | -17.51 | 4,475.38          | 5,511.56  |
| HR Steel, USD / ton    | - | 730.00     | -           | -         | -     | 4.29   | 46.00      | 39.05  | 465.00            | 730.00    |
| CR Steel, USD / ton    | - | 790.00     | -           | -         | 3.95  | 3.95   | 41.07      | 29.51  | 555.00            | 790.00    |

Source: Bloomberg, Estimation: Veles Capital



## International indices

### Russian indices

|                     |   | Close, USD | Change, pt. | Change, % |       |       |            |       | Current year, pt. |          |
|---------------------|---|------------|-------------|-----------|-------|-------|------------|-------|-------------------|----------|
|                     |   |            |             | day       | week  | month | from Jan 1 | year  | min               | max      |
| RTS Index           | ▲ | 2,436.56   | 1.36        | 0.06      | -2.06 | 14.44 | 6.38       | 35.76 | 1,859.53          | 2,498.10 |
| MICEX Index         | ▼ | 1,894.91   | -14.76      | -0.77     | -3.13 | 13.55 | 0.32       | 19.82 | 1,509.70          | 1,966.32 |
| Technical RTS Index | ▲ | 3,608.27   | 10.77       | 0.30      | -1.77 | 14.88 | 14.23      | 48.40 | 2,536.61          | 3,730.73 |
| MSCI Russia         | ▼ | 1,605.69   | -3.85       | -0.24     | -1.69 | 14.89 | 4.51       | 43.87 | 1,251.20          | 1,649.20 |

Source: Bloomberg, Estimation: Veles Capital

### Indices of developed markets

|                        |               | Close, USD | Change, pt. | Change, % |       |       |            |        | Current year, pt. |           |           |
|------------------------|---------------|------------|-------------|-----------|-------|-------|------------|--------|-------------------|-----------|-----------|
|                        |               |            |             | day       | week  | month | from Jan 1 | year   | min               | max       |           |
| DJ Industrial          | USA           | -          | 12,479.63   | -         | -     | -4.21 | -3.20      | -5.92  | -7.61             | 11,634.82 | 13,279.54 |
| NASDAQ                 | USA           | -          | 2,444.67    | -         | -     | -2.84 | 0.90       | -7.83  | -4.40             | 2,155.42  | 2,661.50  |
| FTSE 100               | Great Britain | -          | 6,087.30    | -         | -     | -4.54 | -0.07      | -5.72  | -7.35             | 5,338.70  | 6,534.70  |
| Nikkei 225             | Japan         | ▼          | 13,690.19   | -322.01   | -2.30 | -4.06 | -1.25      | -10.57 | -21.69            | 11,691.00 | 15,413.37 |
| S&P 500                | USA           | -          | 1,375.93    | -         | -     | -3.55 | -1.57      | -6.29  | -9.22             | 1,256.98  | 1,471.77  |
| AEX                    | Netherlands   | ▼          | 478.29      | -0.10     | -0.02 | -3.59 | 2.23       | -7.27  | -10.68            | 401.45    | 518.27    |
| OMX                    | Sweden        | ▲          | 997.56      | 3.33      | 0.33  | -3.79 | -0.13      | -7.76  | -21.39            | 875.02    | 1,081.44  |
| DAX                    | Germany       | ▲          | 6,953.84    | 9.79      | 0.14  | -3.77 | 0.83       | -13.80 | -10.15            | 6,167.82  | 8,100.64  |
| MIB 30                 | Italy         | ▼          | 33,804.00   | -70.00    | -0.21 | -2.22 | -2.20      | -13.07 | -21.69            | 30,583.00 | 38,885.00 |
| CAC 40                 | France        | ▲          | 4,937.84    | 4.07      | 0.08  | -3.97 | -0.81      | -12.05 | -18.48            | 4,416.71  | 5,665.94  |
| SMI                    | Switzerland   | ▼          | 7,363.90    | -96.04    | -1.29 | -5.34 | -1.94      | -13.21 | -21.50            | 6,769.80  | 8,571.76  |
| ASX 200                | Australia     | ▼          | 5,707.00    | -61.00    | -1.06 | -4.07 | 2.14       | -9.98  | -8.73             | 5,039.60  | 6,385.70  |
| Bloomberg European 500 |               | ▼          | 362.55      | -1.29     | -0.36 | -2.65 | 0.13       | -4.86  | -4.05             | 310.63    | 386.01    |

Source: Bloomberg, Estimation: Veles Capital

### Indices of emerging markets

|                        |                | Close, USD | Change, pt. | Change, % |       |       |            |        | Current year, pt. |           |           |
|------------------------|----------------|------------|-------------|-----------|-------|-------|------------|--------|-------------------|-----------|-----------|
|                        |                |            |             | day       | week  | month | from Jan 1 | year   | min               | max       |           |
| MSCI EM                |                | ▼          | 1,193.38    | -14.58    | -1.21 | -4.51 | 0.37       | -4.22  | 18.76             | 1,011.42  | 1,252.59  |
| <b>Europe</b>          |                |            |             |           |       |       |            |        |                   |           |           |
| ASE                    | Greece         | ▼          | 4,021.85    | -44.18    | -1.09 | -5.54 | -0.97      | -22.34 | -18.25            | 3,735.47  | 5,207.44  |
| WSE WIG                | Poland         | ▲          | 46,620.03   | 46.13     | 0.10  | -2.28 | 0.77       | -16.22 | -24.40            | 42,506.24 | 56,066.82 |
| PFTS                   | Ukraine        | ▼          | 907.10      | -12.24    | -1.33 | -6.95 | 6.07       | -22.74 | 6.81              | 824.94    | 1,208.61  |
| BUX                    | Hungary        | ▼          | 22,208.47   | -253.16   | -1.13 | -3.23 | -2.06      | -15.35 | -14.06            | 20,803.64 | 26,242.90 |
| PX                     | Czech Republic | ▼          | 1,657.90    | -13.40    | -0.80 | -3.09 | 5.44       | -8.66  | -8.68             | 1,393.00  | 1,819.50  |
| TA-100                 | Israel         | ▼          | 1,007.97    | -14.29    | -1.40 | -2.35 | -1.06      | -13.38 | -8.15             | 882.87    | 1,167.04  |
| XU 100                 | Turkey         | ▼          | 39,439.35   | -521.64   | -1.31 | -7.20 | -9.53      | -28.99 | -14.62            | 38,174.27 | 55,281.66 |
| <b>Asia and Africa</b> |                |            |             |           |       |       |            |        |                   |           |           |
| HSI                    | Hong Kong      | ▼          | 24,127.31   | -586.76   | -2.37 | -6.27 | -5.45      | -13.25 | 17.58             | 20,572.92 | 27,853.60 |
| SENSEX                 | India          | ▼          | 16,348.50   | -301.14   | -1.81 | -6.23 | -4.54      | -19.47 | 14.02             | 14,677.24 | 21,206.77 |
| JALSH                  | SAR            | ▲          | 32,722.22   | 179.83    | 0.55  | -1.41 | 5.25       | 13.00  | 14.68             | 24,005.35 | 33,309.82 |
| JCI                    | Indonesia      | ▼          | 2,419.73    | -46.23    | -1.87 | -3.63 | 8.00       | -11.88 | 17.44             | 2,167.65  | 2,838.48  |
| KOSPI                  | South Korea    | ▼          | 1,800.58    | -27.36    | -1.50 | -4.50 | -1.32      | -5.09  | 9.49              | 1,537.53  | 1,901.13  |
| SHCOMP                 | China          | ▼          | 3,364.54    | -108.55   | -3.13 | -6.66 | -5.43      | -36.05 | -19.50            | 2,990.79  | 5,522.78  |
| <b>America</b>         |                |            |             |           |       |       |            |        |                   |           |           |
| MEXBOL                 | Mexico         | ▲          | 31,314.55   | 245.85    | 0.79  | -1.52 | 0.99       | 6.02   | 2.00              | 25,282.31 | 32,292.92 |
| IBOV                   | Brazil         | ▲          | 71,628.74   | 176.94    | 0.25  | -2.46 | 9.88       | 12.12  | 38.77             | 53,010.96 | 73,794.14 |
| IPSA                   | Chile          | ▲          | 3,053.02    | 26.11     | 0.86  | 2.17  | 1.11       | 0.04   | -4.90             | 2,369.06  | 3,089.68  |
| IBVC                   | Venezuela      | -          | 34,827.86   | -         | -     | -2.99 | -8.18      | -8.11  | -12.92            | 33,767.05 | 41,584.92 |

Source: Bloomberg, Estimation: Veles Capital

## Information disclosure

### The statement of an analyst and confirmation of the responsibility withdrawal

The given report is prepared by the analyst (-s) of the Investment Company Veles Capital. The given estimations in the present report reflect personal opinion of the analyst (-s). The award of the analysts does not depend, never depended and will not depend upon the specific recommendations or estimations, provided in the present report. The award of the analysts depends upon the general efficiency of the business of the Investment Company Veles Capital, determined by the investment benefit of the company's clients and also upon the incomes from other types of activity of the Investment Company Veles Capital.

The given report, prepared by the Research Department of the Investment Company Veles Capital, is basing on the public information. The present review was prepared independently from other Departments of the Investment Company Veles Capital, and any recommendations and judgments, presented in the given report reflect only the view point of the analyst (-s), participated in making of the present review. Due to that consideration, the Investment Company Veles Capital considers being necessary to state that the analysts and the Company are not responsible for the content of the given report. The analysts of the Investment Company Veles Capital do not take overall responsibility to regularly up-date the information, contained in the present report, and also to announce about all changes, introduced to the present review.

Provided analytical material of the Investment Company Veles Capital could be used only with information aims. The company does not guarantee the completeness and preciousness of provided information in the given report and its reliability, and also is not responsible for direct and indirect losses from using of the given materials. This document cannot serve as a basis for purchase and selling any securities, and cannot also be considered as an offer from the part of the Investment Company Veles Capital. The Investment Company Veles Capital and (or) its subsidiaries along with the staff, directors and analysts of the Investment Company Veles Capital have the right to purchase and sell any securities, mentioned in the given review.

The Investment Company Veles Capital and (or) its subsidiaries can serve as a market-maker or have the liabilities for underwriting of companies' securities, mentioned in the given review, can purchase or sell them for clients, and also make any actions, which do not contradict the Russian law. The Investment Company Veles Capital and (or) its subsidiaries can also be interested in the possibility of providing the companies, mentioned in the present review, with the investments and bank or any other services.

All rights for the given bulletin belong to the Investment Company Veles Capital. The reproduction and/or distribution of the analytical materials of the Investment Company Veles Capital are prohibited without the written permission of the Company. © Veles Capital 2008.

### The principle of recommendation assignment

The investment recommendations are given based on the evaluation of the company's share yield. The basis for the calculation of the expected company's cost is the evaluation by the discounted cash flows method (DCF). In some estimations the method of comparable coefficients, and also the mixed estimation (by DCF method and by comparable coefficients method) are applied. All recommendations are assigned based on the determined by us the fair cost of the shares within the nearest 12 months.

At the present moment the investment scale of the Investment Company Veles Capital is the following:

**BUY** – corresponds to the growth potential of the shares within the nearest 12 months by 15% or more.

**ACCUMULATE** – corresponds to the growth potential of the shares within the nearest 12 months for 5-15%.

**HOLD** – corresponds to the growth (reduction) potential of the shares within the nearest 12 months from -5% to 5%.

**REDUCE** – corresponds to the reduction potential of the shares within the nearest 12 months from 15% to 5%.

**SELL** – corresponds to the reduction potential of the shares within the nearest 12 months by 15% or more.

In some cases the deviations from the evaluation scale given above, based on which the recommendations are assigned, are possible. That fact relates to the high volatility of some securities in particular, and market in the whole, and also to the individual characteristics of one or another issuer.

In order to get additional information and specifications please contact the Research Department of the Investment Company Veles Capital.

---

**Research Department***research@veles-capital.ru*

*Mikhail Zak*  
Head of Department  
*Strategy*  
**MZak@veles-capital.ru**

*Ivan Manaenko*  
*Fixed income market,  
Macroeconomics*  
**IManaenko@veles-capital.ru**

*Ilya Fedotov*  
*Telecommunications*  
**IFedotov@veles-capital.ru**

*Stanislav Fomenko*  
*Metallurgy*  
**SFomenko@veles-capital.ru**

*Marina Irkly*  
*Transport, machinery*  
**Mirkly@veles-capital.ru**

*Oleg Zotikov*  
*Energy*  
**OZotikov@veles-capital.ru**

*Dmitry Lyutyagin*  
*Oil and gas*  
**DLyutyagin@veles-capital.ru**

*Oleg Salmanov*  
*Fixed income*  
**OSalmanov@veles-capital.ru**

*Shawn Gizatulin*  
*Editor/Interpreter*  
**SGizatulin@veles-capital.ru**

---

**Sales and Trading Department***sales@veles-capital.ru*

*Yury Pavlov*  
*Director (VIP clients)*  
**YPavlov@veles-capital.ru**

*Sergey Vetoshkin*  
*Corporative Clients*  
**SVetoshkin@veles-capital.ru**

*Alexander Taran*  
*Trading (Ukraine)*  
**ATaran@veles-capital.com.ua**

*Ekaterina Tochilkina*  
*Trading*  
**ETochilkina@veles-capital.ru**

---

**Strategic Investments Department**

*Andrey Lee*  
*Head of department*  
**ALee@veles-capital.ru**

---

**Assets Management***am@veles-capital.ru*

*Beyshen Isaev*  
*Head of Department*  
**BIsaev@veles-capital.ru**

*Vadim Labed*  
*Investor relations*  
**VLabed@veles-capital.ru**

*Stanislav Brodsky*  
*Investment products*  
**SBrodsky@veles-capital.ru**